



Article

Metal Allergy Mediates the Development of Oral Lichen Planus via TSLP-TSLPR Signaling

Mohammad Fadyl Yunizar , Megumi Watanabe *, Lipei Liu, Norikazu Minami and Tetsuo Ichikawa 

Department of Prosthodontics & Oral Rehabilitation, Graduate School of Biomedical Sciences, Tokushima University, 3-18-15, Kuramoto, Tokushima 770-8504, Japan; c301851006@tokushima-u.ac.jp (M.F.Y.); c301751017@tokushima-u.ac.jp (L.L.); minamino@tokushima-u.ac.jp (N.M.); ichi@tokushima-u.ac.jp (T.I.)

* Correspondence: megwat@tokushima-u.ac.jp

Abstract: Metal allergy is a T-cell-mediated delayed type of hypersensitive reaction. The pathogenetic mechanisms underlying the allergy are unclear, although the condition has been reported to be related to oral lichen planus (OLP), despite an absence of immunological studies to support this relationship. In this study, histopathological samples of OLP patients were examined to compare the metal allergy-positive and -negative groups, with a focus on the network of epidermal keratinocytes and T cells induced by thymic stromal lymphopoietin (TSLP) and its receptor, TSLPR. Infiltration of T cells into the epithelium was revealed to be higher in the OLP lesions of metal allergy-positive patients than in those of metal allergy-negative patients. Moreover, TSLP-TSLPR signaling and TNF- α production were higher in the epithelial tissue samples of the metal allergy-positive patients than in the metal allergy-negative patients. Metal allergy is associated with both increased expressions of TSLP in keratinocytes and increased TNF- α levels in the epithelium. We propose that this would promote the accumulation of T cells at the lesion site, contributing to the formation of the disease. These results suggest that metal allergy may be an aggravating factor in the pathogenesis of OLP.

Keywords: metal allergy; oral lichen planus; TSLP-TSLPR



Citation: Yunizar, M.F.; Watanabe, M.; Liu, L.; Minami, N.; Ichikawa, T. Metal Allergy Mediates the Development of Oral Lichen Planus via TSLP-TSLPR Signaling. *J. Clin. Med.* **2022**, *11*, 519. <https://doi.org/10.3390/jcm11030519>

Academic Editor: Lorenzo Cosmi

Received: 8 December 2021

Accepted: 18 January 2022

Published: 20 January 2022

Publisher's Note: MDPI stays neutral with regard to jurisdictional claims in published maps and institutional affiliations.



Copyright: © 2022 by the authors. Licensee MDPI, Basel, Switzerland. This article is an open access article distributed under the terms and conditions of the Creative Commons Attribution (CC BY) license (<https://creativecommons.org/licenses/by/4.0/>).

1. Introduction

Metal allergy is a delayed type of hypersensitive reaction, the pathogenesis of which is mediated by a complex immune network of T-cell-mediated interactions [1–3]. However, the precise mechanisms by which metal allergy causes disease have not been fully elucidated. Although skin diseases such as palmoplantar pustulosis and psoriasis have been considered to be related to metal allergy [4–6], their causal roles in the development of metal allergy have not yet been established. Among similar skin diseases, oral lichen planus (OLP) has been posited to be related to dental metal allergy [7]. During dental treatment, symptoms of OLP can be observed on the oral mucosa in areas where it is in contact with metal. Furthermore, it is common for such patients to test positive for allergies to some metals upon analysis with a patch test. From epidemiological and clinical perspectives, dentists have suggested that there may therefore be a relationship between metal allergy and OLP, but to date, no immunological studies have been conducted to test this hypothesis. As both metal allergy and OLP are caused by the presence of T cells in the skin and mucosa, we consider it vital to focus on the network of interactions between T cells and keratinocytes to determine the relationship, if any, between these two diseases.

In this study, the histopathology details of patients diagnosed by biopsy as having OLP were examined by comparing differences between metal allergy-positive and -negative groups. The network of interactions between epidermal keratinocytes and T cells induced by TSLP and its receptor TSLPR were then analyzed for differences.

2. Materials and Methods

2.1. Patients

A total of 64 patients, 12 males and 52 females, who visited the Department of Oral Surgery and the Department of Oral Medicine at Tokushima University Hospital, were diagnosed with OLP by biopsy. Of these patients, 34 patients, 6 males and 28 females, were diagnosed as positive for metal allergy, and 30 patients, 6 males and 24 females, were diagnosed as negative for metal allergy by patch testing. All mucosal tissue samples were excised prior to the patch test, with metal still being present in the mouth at this point. Immunohistochemical staining was performed to screen for immune cell populations that had infiltrated the oral mucosa, and the tissues of patients diagnosed with OLP who were allergic to some metals (as shown by patch tests) were compared to tissues of those who were not allergic to metals.

2.2. Antibodies

The primary antibodies specific for human UCHL1, S-100 and cytokeratin were obtained from NICHIREI BIOSCIENCE INC. (Tokyo, Japan). Antibodies specific for human CD11b were obtained from BioLegend, Inc. (San Diego, CA, USA). The antibody specific for human TNF alpha was from eBioscience (San Diego, CA, USA). Antibodies specific for human TSLP and TSLPR were obtained from R&D SYSTEMS, Inc. (Minneapolis, MN, USA).

2.3. Histology and Immunohistochemistry

Paraffin-embedded blocks made for diagnosis by biopsy were used. The samples were cut into 8 µm slices using a microtome REM-710-SB (YAMATO KOUKI, Miyazaki, Japan) and placed on MAS-coated glass slides (Matsunami Glass IND LTD, Osaka, Japan). Sections were stored at room temperature until they were used. Dewaxing was performed in xylene (FUJIFILM Wako Pure Chemical Corporation, Osaka, Japan) for 10 min, followed by rinsing in 90%, 95%, and 100% ethanol (Wako) for 10 min each. The sections were treated with 100% methanol (Wako) containing 0.3% H₂O₂ (Wako) for 10 min to block endogenous peroxidase activity and thereby reduce non-specific background staining. The sections were incubated overnight at 4 °C with primary antibodies. After two 10-min washes, Histofine simple stain reagent (NICHIREI) was applied as an HRP antibody for 30 min at room temperature, followed by two washing steps of 10 min. Sections were incubated with DAB (NICHIREI) for a time that achieved optimal coloration. Sections were then incubated for 30 s in hematoxylin (MUTO PURE CHEMICAL, Tokyo, Japan) for nuclear counter staining and placed in running tap water for 10 min. Sections were then dehydrated by being dipped in 80%, 90% and 100% ethanol and dipped in xylene twice. Finally, sections were covered with the mounting medium Entellan[®] new (Merck, Darmstadt, Germany).

2.4. Analysis of Immunohistochemistry Staining

Immunohistochemistry images were taken by a Keyence All-in-One Fluorescence Microscope (BZ-X800, Osaka, Japan). The resultant 100× magnification image was analyzed by a Keyence Software, BZ-X800 Analyzer. The tissue area was separated into epithelial and subepithelial areas with a border line. The percentage of the cell number was calculated by the total area of cell spreading divided by the total area of the tissue (Supplementary Materials Figure S1).

2.5. Cell Culture

Human keratinocyte cell line HaCaT was kindly provided by Dr. Y. Kudo (Tokushima University, Tokushima, Japan). The cells were cultured in Dulbecco's Modified Eagle Medium (DMEM) (Nacalai Tesque, Kyoto, Japan) supplemented with 10% fetal bovine serum (FBS) and 1% penicillin/streptomycin/amphotericin B in a humidified atmosphere of 5% CO₂ at 37 °C. HaCaT cells were stimulated with 250 µM NiCl₂ for 24, 48, and 72 h before analysis.

2.6. Quantitative Real-Time PCR Reactions and Primers

Real-time polymerase chain reaction (PCR) was performed to screen for pro-inflammatory cytokines produced by human epithelial cells in response to metal stimulation. The expression of inflammatory cytokines in HaCaT upon stimulation with the metal antigen NiCl₂ was then analyzed. Total RNA was extracted using TRIzol (Thermo Fisher Scientific, Waltham, MA, USA) according to the manufacturer's protocol. First-strand cDNA was synthesized with 500 ng RNA by PrimeScript (Takara bio Inc., Kusatsu, Japan). The real-time PCR was performed with TB-Green (Takara bio Inc.) on the ABI7300 Real Real-time PCR System (Applied Biosystems, Waltham, MA, USA) according to manufacturer instructions. The primer sequences are as follows.

TNF- α sense: 5'-AGCCTGTAGCCCATGTTGTAGC-3', antisense: 5'-ATCTCTCAGCTCCACGCCATTG-3', IL-1 β sense: 5'-GCTGAGGAAGATGCTGGTTC-3', antisense: 5'-GTGATCGTACAGGTTCGCATCG-3', TSLP sense: 5'-GCCATGAAAATAAGGCTGC-3', antisense: 5'-CGCCACAATCCTTGTAATTG-3', TSLPR sense: 5'-TGACGTGTTCTGACCTGTCC-3', antisense s: 5'-TCCATAGCCTTCACCCTGAC-3', CCR2 sense: 5'-GGCCTGATAACTGTGAAAGCA-3', antisense: 5'-CAGCAGTGAGTCATCCCAAGAG-3', CCL2 sense: 5'-CAAGTGTCCCAAAGAAGCTG-3', antisense: 5'-GAGTTTGGGTTTGCTTGTCC-3', IL-6 sense: 5'-TGAGGAGACTTGCTGGTGA-3', antisense: 5'-GTTGGGTCAGGGGTGGTTAT-3', IL-12 sense: 5'-CTCCTCCTTGTGGCTACCCT-3', antisense: 5'-AGGCATGGGAACATTCCTGG-3', IL-17 sense: 5'-AACCGATCCACCTCACCTTG-3', antisense: 5'-TCTCTTGCTGGATGGGGACA-3', β -actin sense: 5'-TGTTACAGGAAGTCCCTTGCCATC-3', antisense: 5'-CTGTGTGGACTTGGGAGAGGAC-3'.

2.7. ELISA

HaCaT cells were stimulated with NiCl₂ in 96-well dishes and culture supernatant was collected 24 and 48 h after the stimulation. The TNF- α and IL-1 β production were measured using a human TNF- α ELISA (eBioscience, San Diego, CA, USA) and human IL-1 β ELISA (Invitrogen, MA, USA) according to the manufacturers' instructions.

2.8. Statistical Analysis

All experiments were repeated at least three times with similar results. Experimental values are given as means \pm SD. The statistical difference was determined by a one-way ANOVA with LSD (least significant difference), Tukey's HSD (honestly significant difference) test, and two independent samples: unpaired *t*-test or Pearson's χ^2 -test. Statistical significance is presented in the following manner: * $p < 0.05$, ** $p < 0.01$, *** $p < 0.001$. The results of statistical analysis are shown in Supplementary Materials Tables S2 and S3.

3. Results

3.1. Profiles of Infiltrated Cells in Mucosa of OLP Lesions

Supplementary Materials Table S1 shows the clinical information of the patients. There was no statistically significant difference in site of the lesion, types of prosthetic devices, and lesion-to-metal contact between positive and negative patients. Infiltration of immune cells, such as T cells, macrophages, and dendritic cells (DCs), into lesions was observed in all samples (Figure 1a). Moreover, the infiltration of DCs and T cells into epithelial tissue samples was significantly higher in patients who exhibited metal allergies than in those who did not (Figure 1b,c).

3.2. Pro-Inflammatory Cytokines Produced by Cultured HaCaT Cells Stimulated with NiCl₂

The expression of tumor necrosis factor (TNF)- α , interleukin (IL)-1 β , IL-6, TSLP, and TSLPR mRNA was up-regulated 72 h after stimulation in a time-dependent manner (Figure 2a). Similarly, enzyme-linked immunoassay analysis of the culture supernatant of HaCaT stimulated with NiCl₂ showed that the production of TNF- α and IL-1 β both increased significantly after stimulation (Figure 2b).

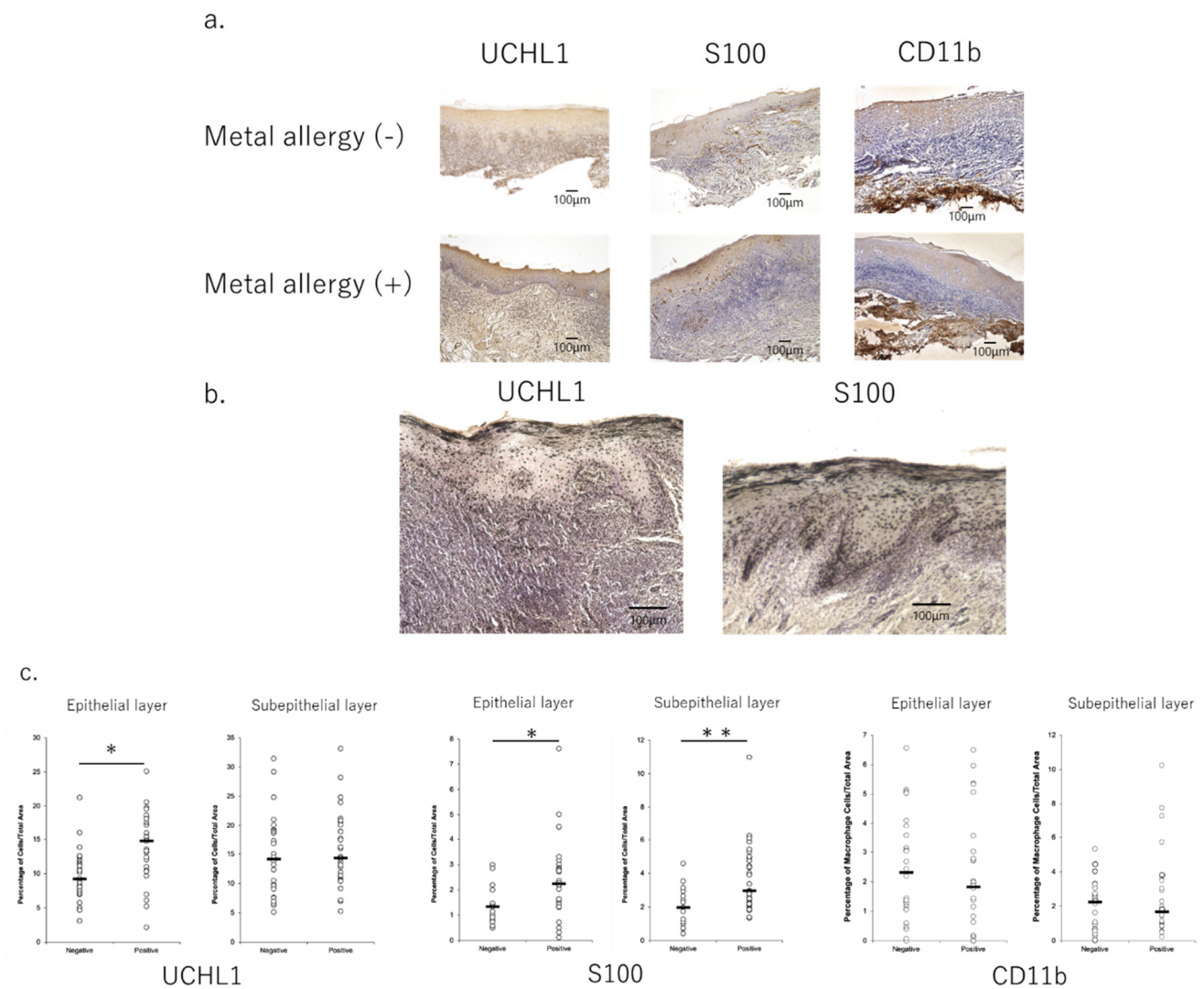


Figure 1. Profile of infiltrated cells in the mucosa of oral lichen planus lesions with immunohistochemistry. (a) UCHL1 and S100 staining showed the difference between metal allergy-negative and -positive tissue. 100× magnification images. (b) UCHL1 and S100-positive cells in the epithelial tissues were more abundant in metal allergy-positive patients. Images with 200× magnification. (c) UCHL1 and S100-positive cells in the epithelial tissues were significantly more abundant in metal allergy-positive patients than in allergy-negative patients. Images were analyzed via Keyence Software. The tissue area was separated into epithelial and subepithelial areas with a border line. The percentage of cell number expressing each marker was calculated by dividing the total area of cells by the total area of the tissue, then converting to a percentage. Data are shown as mean ± SD. * $p < 0.05$, ** $p < 0.01$; unpaired t -test.

3.3. Secretion of Pro-Inflammatory Cytokines in OLP Lesions

Although TSLP was produced in both allergy-negative and -positive patients, TSLP, TSLPR and TNF- α were all produced at significantly higher quantities in the mucosal epithelium samples of the former (Figure 3a,b). Immunofluorescence staining was used to identify the cells that produced these cytokines, revealing that TSLP was found to be produced by keratinocytes, especially in the basal layer of epithelium. Moreover, TNF- α expression was also widely observed in epidermal tissue samples (Figure 3d).

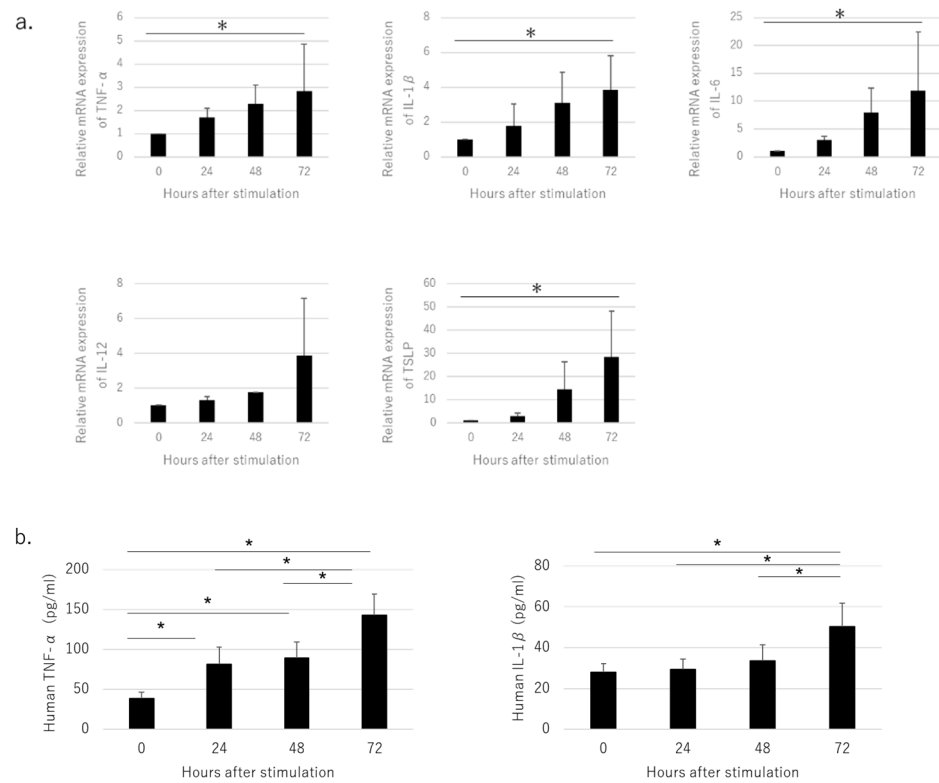


Figure 2. Pro-inflammatory markers produced by cultured HaCaT cells stimulated with NiCl₂. (a) Expression of TNF-α, IL-1β, IL-6, and TSLP and IL-12 was increased in HaCaT stimulated with Ni, as measured by quantitative real-time PCR. (b) Production of TNF-α and IL-1β was increased in HaCaT cells stimulated with Ni. Left panel shows TNF-α production and right panel shows IL-1β production, as analyzed by ELISA. Data are shown as mean ± SD and are representative of at least three independent experiments. * *p* < 0.05; one-way ANOVA with LSD.

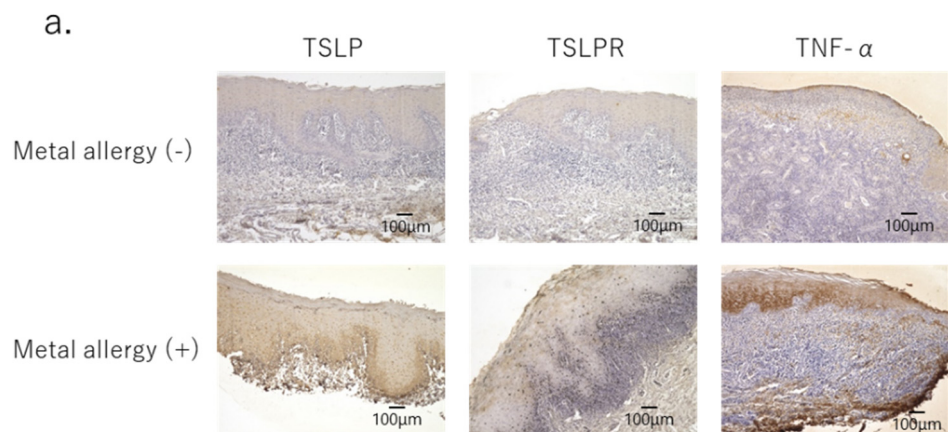


Figure 3. Cont.

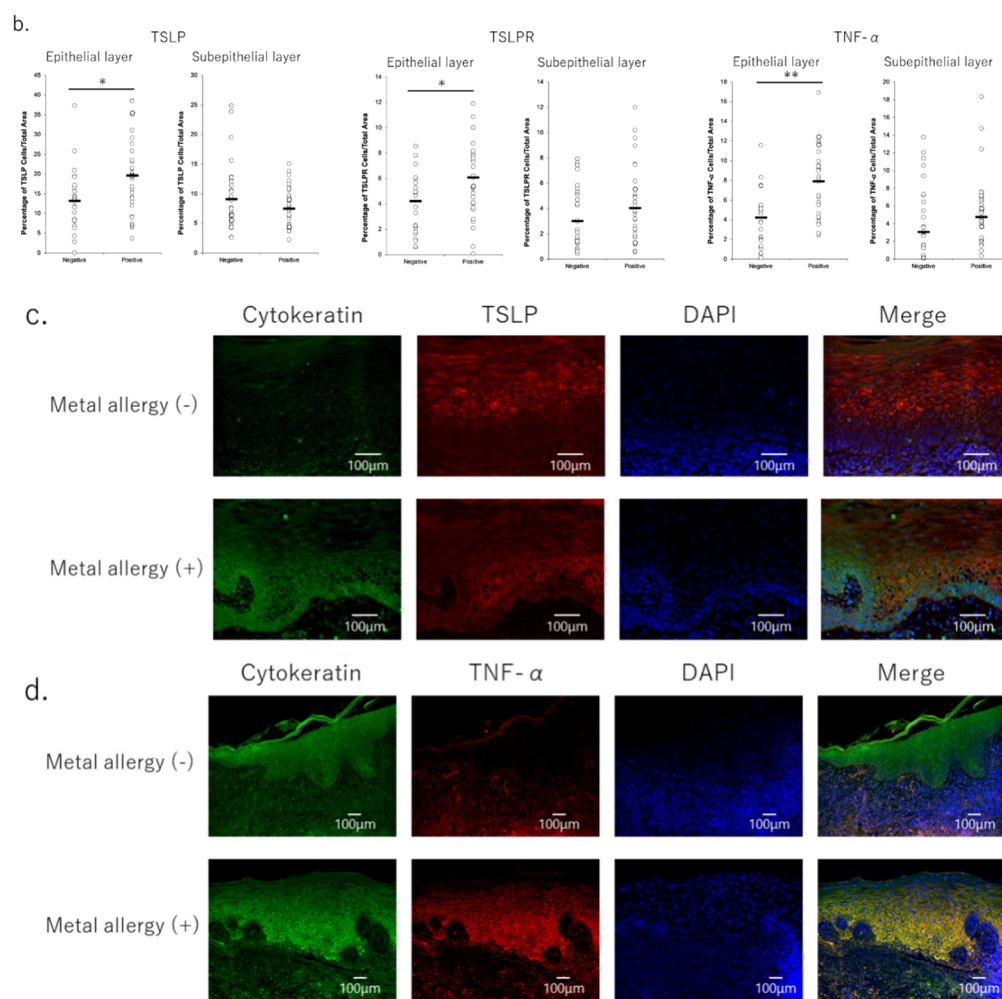


Figure 3. Pro-inflammatory cytokines secreted in oral lichen planus lesions. (a) TNF- α , TSLP, and TSLPR secretions were increased in the epithelial layer of oral lichen planus tissues in metal allergy-positive patients. Images with 100 \times magnification. (b) TSLP, TSLPR and TNF- α secretions were increased in the epithelial layer of oral lichen planus tissues in metal allergy-positive patients. * $p < 0.05$, ** $p < 0.01$; unpaired t -test. (c,d) TSLP and TNF- α secretions by keratinocytes were increased in the epithelial layer of oral lichen planus tissues in metal allergy-positive patients. (c) 200 \times magnification images, (d) 100 \times magnification images.

4. Discussion

OLP is a T-cell-mediated chronic inflammatory disease of unclear etiology that occurs in the oral mucosa. OLP commonly manifests in the buccal mucosa, tongue, and gingiva as white striations, erythema, or erosions. Microscopic examination of patients' lesional tissue samples reveals a marked subepithelial band of lymphocytic infiltration, increased numbers of intraepithelial lymphocytes, and the degeneration of basal keratinocytes [8,9].

Although several factors have been suggested to be involved in the pathogenesis of OLP, the exact relationships among these factors remain to be elucidated. One leading hypothesis is that cellular immunity plays an important role in the pathogenesis of OLP. The degeneration of basal layer keratinocytes might plausibly be explained by a pathogenic process in which T cells accumulate and become activated in the basal keratinocytes of the epithelium, thereby damaging the keratinocytes. However, the antigen that attracts these T cells remains unclear. As both CD4⁺ T helper (Th) cells and CD8⁺ cytotoxic T cells are activated in OLP (B, C), there may not be one single antigen that triggers the disease. The majority of T cells adjacent to degenerated basal keratinocytes have been shown to be CD8⁺ T cells [8,9]. In addition, the number of Langerhans cells (LCs) showing enhanced

expression of major histocompatibility complex class II was higher in OLP lesions. These activated LCs activate CD4⁺ T cells, which accumulate in the mucosal lamina propria and produce Th1-type cytokines such as IL-2 and interferon (IFN)- γ [8–10]. Metal allergy is an immune response that is initiated by the interaction of CD4⁺ cells with LCs and DCs. Although it is unclear whether OLP or metal allergy comes first, they may each mutually promote disease.

Wang et al. revealed that the balance between Th1 and Th2 cells plays an important role in the pathogenesis of OLP [10]. In this study, the expression of IFN- γ and IL-4 was found to be increased in the serum and lesional tissues of OLP patients compared with controls. Moreover, the IFN- γ /IL-4 ratio was significantly elevated in the peripheral blood samples of these patients, suggesting that Th1 cells may play a leading role in the Th1/Th2 immune balance postulated to have a role in the pathogenesis of OLP. Here, we found that metal allergy-positive patients with OLP produced more TNF- α in the epithelium than did negative patients, and that they exhibited a higher expression of TSLP in keratinocytes within the epithelial basal layer. TSLP is a cytokine that is produced by epithelial cells; it plays an important role in T cell differentiation by activating antigen-presenting cells and is also thought to be involved in the induction of Th2 cells by activating DCs and T cells. Its expression is regulated by many other cytokines, such as IL-1 β and TNF- α [11,12]. Normal human bronchial epithelial cells cultured in the presence of IL-1 β or TNF- α have been shown to exhibit increased mRNA expression of TSLP [11]. Here, the production of IL-1 β and TNF- α increased over time when HaCaT was stimulated with Ni in vitro. This was followed by an increase in TSLP production, suggesting that these cytokines, which were produced by HaCaT itself, may induce the production of TSLP by HaCaT in an autocrine manner. The production of TSLP and TNF α by keratinocytes was also observed in the oral mucosal epithelium of patients with metal allergy-positive OLP; TSLP and TNF α production was significantly higher in these patients than in those who were negative for metal allergy.

In recent years, TSLP has been shown to be involved in the pathogenesis of allergic diseases such as asthma and atopic dermatitis, as well as inflammatory arthritis. Moreover, analysis conducted using genetically modified mice has revealed that TSLP is a master switch for the development of allergic diseases [13–18]. In particular, TSLP is known to be expressed in keratinocytes from patients with atopic dermatitis [13]. TSLP expression has also been revealed to be upregulated in the lesional epidermis of atopic dermatitis patients, compared to the levels found in the epidermis of healthy patients [13]. In mouse models, the presence of high levels of TSLP in the skin has been revealed to result in inflammatory disease, producing a predominance of Th2 cytokines. In addition, the expression of TSLP in the epidermis has been found to result in a spontaneous disease resembling atopic dermatitis. In this experimental model, elevated TSLP levels in the epidermis were shown to induce Th2 cytokine-associated inflammation. TSLP acts on CD11c⁺ DCs in the absence of IL-12, induces the OX40 ligand on DCs, and selectively induces naive T cells to differentiate into Th2 cells via OX40 on T cells [19]. Furthermore, TSLP is known to induce the differentiation of naive T cells into Th2 cells [19]. In addition, the expression of TSLP has been associated with the migration and activation of LCs in situ [13]. Based on these findings, TSLP produced by mucosal epithelial cells and skin keratinocytes that have been allergically injured by chemicals, microorganisms, or allergens could contribute to the induction of allergic inflammation by activating epidermal–dermal DCs [19]. Moreover, TSLP can directly promote Th2 cell differentiation in naive T cells via a combination of T-cell-receptor stimulation and TSLP treatment [20,21]. Interestingly, naive CD4⁺ T cells that have been treated with TSLP have been shown to exhibit the potential to induce IFN- γ , along with IL-4 and IL-2, within 48 h after treatment. This suggests that TSLP could also play a role in Th1-type inflammation [21].

Metal allergy is a Th1-type hypersensitivity reaction that involves CD11c⁺ DCs [22,23]. Thus, TSLP produced by keratinocytes may act on CD11c⁺ DCs to produce an allergic reaction due to metal stimulation. Ashrin et al. found that the expression of TSLP on

CD11c⁺ DCs was significantly increased in the ear skin of metal allergy mouse models, indicating that suppression of TSLP expression in the ear skin attenuated allergic inflammation [24]. Here, the numbers of DCs and T cells infiltrating the epithelium in OLP tissue were higher in metal allergy-positive patients than in -negative patients, and that the infiltrating DCs and T cells expressed TSLPR. In other words, TSLP-TSLPR signaling between keratinocytes and DCs, or between keratinocytes and T cells, was enhanced in the OLP lesions of metal-allergic patients.

Here, the stimulation of the mucosa with metal ions continued because mucosal tissue samples were collected before the patch test, prior to the removal of metals. Therefore, in the lesional mucosa of patients with OLP who were positive for metal allergy, the activation of TSLP-TSLPR signaling may have proceeded simultaneously due to both the pathogenesis of OLP and stimulation from oral metals.

The activation of keratinocytes and the increased expression of TSLPs stimulated by oral metals may increase the infiltration of T cells into the epithelium through interactions with TSLPR on T cells. This could explain why the number of T cells infiltrating the epithelium was found here to be higher in metal allergy-positive patients than in -negative patients. In addition, stimulation from metal residues within the oral cavity can infiltrate and activate LCs in the epithelium. Furthermore, TNF- α and IL-1 β , which are produced by keratinocytes both in response to metal stimulation and during the pathogenesis of OLP, can also enhance the activation of LCs. Moreover, TNF- α also increases the expression of the vascular endothelial cell adhesion molecules E-selectin, ICAM-1, and VCAM-1, and it recruits lymphocytes to the mucosal lesion. TNF- α has been reported to be expressed in the epithelial basal layer, while TNF-R1 has been shown to be expressed in T cells that are infiltrating OLP areas [8,25–28]. Thus, the increased numbers of infiltrating DCs, LCs, and T cells in the OLP tissues of metal allergy-positive patients observed here may have occurred due to the pathology of metal allergy superimposing on that of OLP itself.

Considering the relationship between metal allergy and OLP, there are many similarities between the phenomena seen in OLP lesions and in metal allergic epithelium, suggesting that metal allergy may be an aggravating factor in the pathogenesis of OLP. In addition, the pathogenesis of OLP is multifactorial; thus, it is possible that metal allergy can increase the expression of TSLP in keratinocytes and that it can increase TNF- α levels in the epithelium. This would lead to the accumulation of T cells in the lesion site, fostering the formation of the disease. In addition, metals or metal-denatured proteins may be candidates as antigens for OLP.

Such a complex hypothesis for pathogenesis may be compared with the allergic march, in which patients with one allergic disease, such as atopic dermatitis, are affected by other allergic diseases, one after another. TSLPs have been suggested to be involved in the allergic march [15], but the precise nature of their involvement remains unclear.

A survey of metal allergies reported in 2015 revealed that in epidemiological studies, a high percentage of patients with metal allergies also had atopic dermatitis, allergic rhinitis, and food allergies [29]. Our finding that TSLP-TSLPR expression is significantly elevated in patients with OLP and metal allergies may be key to unravelling the connections between these conditions in future studies.

5. Conclusions

The infiltration of T cells into the epithelium was revealed here to be higher in the OLP lesions of metal allergy-positive patients than in those of metal allergy-negative patients. Moreover, TSLP-TSLPR signaling was higher in the epithelial tissue samples of the metal allergy-positive patients than in the metal allergy-negative patients. This signaling pathway between keratinocytes and T cells may be key to explaining the simultaneous development of multiple allergic conditions. Further studies on a larger scale are required to explore this proposed mechanism.

Supplementary Materials: The following supporting information can be downloaded at: <https://www.mdpi.com/article/10.3390/jcm11030519/s1>, Figure S1: Image analysis with 100× magnification image; Table S1: Clinical information of patients. There were no statistically significant differences in clinical points between metal allergy-negative patients and positive patients; Table S2: Results of statistical analysis for Immunohistochemistry with SPSS. Table S3: Results of statistical analysis for clinical information of patients (Pearson's χ^2 -test).

Author Contributions: Conceptualization, M.F.Y., M.W. and T.I.; methodology, M.W.; validation, L.L., N.M. and M.W.; formal analysis, M.F.Y. and L.L.; investigation, M.F.Y. and L.L.; resources, M.W. and T.I.; data curation, M.F.Y., L.L. and M.W.; writing—original draft preparation, M.F.Y.; writing—review and editing, M.W.; visualization, M.F.Y.; supervision, M.W.; project administration, T.I.; funding acquisition, M.W. All authors have read and agreed to the published version of the manuscript.

Funding: This work was supported by JSPS KAKENHI Grant Number 18K09661.

Institutional Review Board Statement: Ethics Committee of Tokushima University (No. 1698-5, 26 April 2021 approved).

Informed Consent Statement: Informed consent was obtained from all subjects involved in the study.

Data Availability Statement: All relevant data are included within the paper itself.

Acknowledgments: This study was supported by the Support Center for Advanced Medical Sciences, Tokushima University Graduate School of Biomedical Sciences.

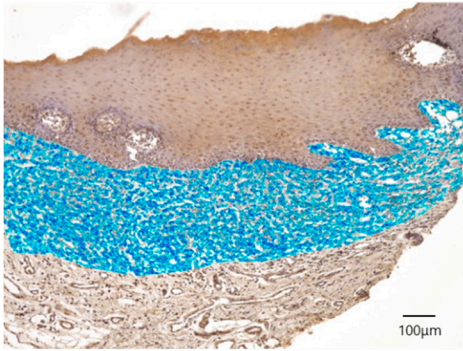
Conflicts of Interest: The authors declare no conflict of interest.

References

1. Büdinger, L.; Hertl, M. Immunologic mechanisms in hypersensitivity reactions to metal ions: An overview. *Allergy* **2000**, *55*, 108–115. [[CrossRef](#)]
2. Martin, S.F.; Jakob, T. From innate to adaptive immune responses in contact hypersensitivity. *Curr. Opin. Allergy Clin. Immunol.* **2008**, *8*, 289–293. [[CrossRef](#)]
3. Riedel, F.; Aparicio-Soto, M.; Curato, C.; Thierse, H.J.; Siewert, K.; Luch, A. Immunological Mechanisms of Metal Allergies and the Nickel-Specific TCR-pMHC Interface. *Int. J. Environ. Res. Public Health* **2021**, *18*, 10867. [[CrossRef](#)]
4. Rasool, F.; Akhtar, S.; Hassan, I.; Zeerak, S.; Mubashir, S.; Sheikh, G. Common Contact Allergens in Patients with Palmoplantar and Scalp Psoriasis and Impact of their Avoidance on Dermatology Life Quality Index: A Hospital-Based Study. *Indian J. Dermatol.* **2018**, *63*, 160–164.
5. Quarant, M.; Eyerich, S.; Knapp, B.; Nasorri, F.; Scarponim, C.; Mattii, M.; Garzorz, N.; Harlfinger, A.T.; Jaeger, T.; Grosber, G.; et al. Allergic Contact Dermatitis in Psoriasis Patients: Typical, Delayed, and Non-Interacting. *PLoS ONE* **2014**, *9*, e101814. [[CrossRef](#)]
6. Verneti, A.M.B.; Puntoni, M.; Massone, C. Palmoplantar Pustulosis and Allergies: A Systematic Review. *Dermatol. Pr. Concept.* **2019**, *9*, 105–110. [[CrossRef](#)]
7. Scalf, L.A.; Fowler, J.F., Jr.; Morgan, K.W.; Looney, S.W. Dental metal allergy in patients with oral, cutaneous, and genital lichenoid reactions. *Am. J. Contact Dermat.* **2001**, *12*, 146–150. [[PubMed](#)]
8. Sugerman, P.B.; Savage, N.W.; Walsh, L.J.; Zhao, Z.Z.; Zhou, X.J.; Khan, A.; Seymour, G.J.; Bigby, M. The pathogenesis of oral lichen planus. *Crit. Rev. Oral Biol. Med.* **2002**, *13*, 350–365. [[CrossRef](#)] [[PubMed](#)]
9. Zhou, X.J.; Sugerman, P.B.; Savage, N.W.; Walsh, L.J.; Seymour, G.J. Intra-epithelial CD8+ T cells and basement membrane disruption in oral lichen planus. *J. Oral Pathol. Med.* **2002**, *31*, 23–27. [[CrossRef](#)] [[PubMed](#)]
10. Wang, Y.; Zhou, J.; Fu, S.; Wang, C.; Zhou, B. A Study of Association between Oral Lichen Planus and Immune Balance of Th1/Th2 Cells. *Inflammation* **2015**, *38*, 1874–1879. [[CrossRef](#)]
11. Lee, H.-C.; Ziegler, S.F. Inducible expression of the proallergic cytokine thymic stromal lymphopoietin in airway epithelial cells is controlled by NF κ B. *Proc. Natl. Acad. Sci. USA* **2007**, *104*, 914–919. [[CrossRef](#)] [[PubMed](#)]
12. Kato, A.; Favoretto, S., Jr.; Avilla, P.C.; Schleimer, R.P. TLR3- and Th2 Cytokine-Dependent Production of Thymic Stromal Lymphopoietin in Human Airway Epithelial Cells. *J. Immunol.* **2007**, *179*, 1080–1087. [[CrossRef](#)] [[PubMed](#)]
13. Soumelis, V.; Reche, P.A.; Kanzler, H.; Yuan, W.; Edward, G.; Homey, B.; Gilliet, M.; Ho, S.; Antonenko, S.; Lauerma, A.; et al. Human epithelial cells trigger dendritic cell-mediated allergic inflammation by producing TSLP. *Nat. Immunol.* **2002**, *3*, 673–680. [[CrossRef](#)] [[PubMed](#)]
14. Liu, Y.-J.; Soumelis, V.; Watanabe, N.; Ito, T.; Wang, Y.-H.; de Waal Malefyt, R.; Omori, M.; Zhou, B.; Ziegler, S.F. TSLP: An Epithelial Cell Cytokine that Regulates T Cell Differentiation by Conditioning Dendritic Cell Maturation. *Annu. Rev. Immunol.* **2007**, *25*, 193–219. [[CrossRef](#)]
15. Ziegler, S.F.; Artis, D. Sensing the outside world: TSLP regulates barrier immunity. *Nat. Immunol.* **2010**, *11*, 289–293. [[CrossRef](#)]
16. Liu, Y.-J. Thymic stromal lymphopoietin: Master switch for allergic inflammation. *J. Exp. Med.* **2006**, *203*, 269–273. [[CrossRef](#)]

17. Holgate, S.T.; Arshad, H.S.; Roberts, G.C.; Howarth, P.H.; Thurner, P.; Davies, D.E. A new look at the pathogenesis of asthma. *Clin. Sci.* **2009**, *118*, 439–450. [[CrossRef](#)]
18. Yoo, J.; Omori, M.; Gyarmati, D.; Zhou, B.; Aye, T.; Brewer, A.; Comeau, M.R.; Campbell, D.J.; Ziegler, S.F. Spontaneous atopic dermatitis in mice expressing an inducible thymic stromal lymphopoietin transgene specifically in the skin. *J. Exp. Med.* **2005**, *202*, 541–549. [[CrossRef](#)]
19. Ito, T.; Wang, Y.H.; Duramad, O.; Hori, T.; Delespesse, G.J.; Watanabe, N.; Qin, F.X.; Yao, Z.; Cao, W.; Liu, Y.J. TSLP-activated dendritic cells induce an inflammatory T helper type 2 cell response through OX40 ligand. *J. Exp. Med.* **2005**, *202*, 1213–1223. [[CrossRef](#)]
20. Al-Shami, A.; Spolski, R.; Kelly, J.; Keane-Myers, A.; Leonard, W.J. A role for TSLP in the development of inflammation in an asthma model. *J. Exp. Med.* **2005**, *202*, 829–839. [[CrossRef](#)]
21. Omori, M.; Ziegler, S. Induction of IL-4 expression in CD4(+) T cells by thymic stromal lymphopoietin. *J. Immunol.* **2007**, *178*, 1396–1404. [[CrossRef](#)] [[PubMed](#)]
22. Watanabe, M.; Ishimaru, N.; Ashrin, M.N.; Arakaki, R.; Yamada, A.; Ichikawa, T.; Hayashi, Y. A novel DC therapy with manipulation of MKK6 gene on nickel allergy in mice. *PLoS ONE* **2011**, *6*, e19017. [[CrossRef](#)] [[PubMed](#)]
23. Saito, M.; Arakaki, R.; Yamada, A.; Tsunematsu, T.; Kudo, Y.; Ishimaru, N. Molecular Mechanisms of Nickel Allergy. *Int. J. Mol. Sci.* **2016**, *17*, 202. [[CrossRef](#)]
24. Ashrin, M.N.; Arakaki, R.; Yamada, A.; Kondo, T.; Kurosawa, M.; Kudo, Y.; Watanabe, M.; Ichikawa, T.; Hayashi, Y.; Ishimaru, N. A Critical Role for Thymic Stromal Lymphopoietin in Nickel-Induced Allergy in Mice. *J. Immunol.* **2014**, *192*, 4025–4031. [[CrossRef](#)] [[PubMed](#)]
25. Zhao, Z.Z.; Savage, N.W.; Pujic, Z.; Walsh, L. Immunohistochemical localization of mast cells and mast cell-nerve interactions in oral lichen planus. *Oral Dis.* **2008**, *3*, 71–76. [[CrossRef](#)]
26. Zhou, X.J.; Sugerman, P.B.; Savage, N.W.; Walsh, L. Matrix metalloproteinases and their inhibitors in oral lichen planus. *J. Cutan. Pathol.* **2001**, *28*, 72–82. [[CrossRef](#)]
27. Juneja, M.; Mahajan, S.; Rao, N.N.; George, T.; Boaz, K. Histochemical analysis of pathological alterations in oral lichen planus and oral lichenoid reactions. *J. Oral Sci.* **2006**, *48*, 185–193. [[CrossRef](#)]
28. Jontell, M.; Hansson, H.-A.; Nygren, H. Mast cells in oral lichen planus. *J. Oral Pathol. Med.* **1986**, *15*, 273–275. [[CrossRef](#)]
29. Hosoki, M.; Tanoue, N.; Watanabe, M.; Yamase, M.; Iida, S.; Maida, T.; Oodaira, C.; Ookubo, C.; Akiba, Y.; Hattori, M. A Multi-Institutional Survey of Clinical Symptoms and Prosthodontic Treatment for Metal Allergy to Dental Materials. *J. Jpn. Assoc. Dent. Sci.* **2015**, *34*, 44–48. (In Japanese)

Subepithelial lesion



Epithelial lesion

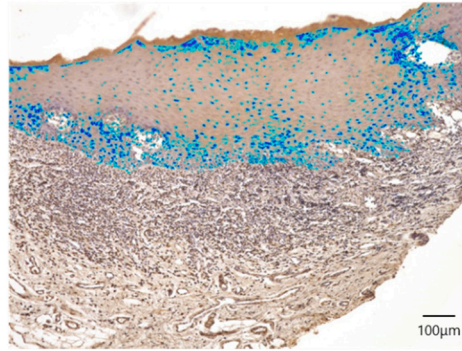


Figure S1. Image analysis with 100X magnification image. Immunohistochemistry images were taken by a Keyence All-in-One Fluorescence Microscope (BZ-X800, Osaka, Japan). Immunohistochemistry stained positive cells were detected as blue and the percentage of cell number was calculated by the total area of cell spreading divided total area of tissue by Keyence Software BZ-X800 Analyzer.

Table S1. Clinical information of patients. There were no statistically significant differences in clinical points between metal allergy-negative patients and positive patients.

Allergy	Negative	Positive
Sex	Male: 6, Female: 24	Male: 6, Female: 28
Average age	67.3	62.8
Lesion (number)	BM: 27, G: 13, T: 2	BM: 32, G: 8, T: 4
Prosthesis (number)	Cr: 30, In: 13, AF: 6, PD: 4	Cr: 28, In: 7, AF: 1, PD: 4
Contact with metal prosthesis (cases)	23	29

Lesion: $p = 0.337138464$, Prosthesis: $p = 0.282566$, Contact: $p = 0.336446589$ (Pearson's χ^2 -test). Lesion; BM: buccal mucosa, G: gum, T: tongue. Prosthesis; Cr: metal crown, In: metal inlay, AF: amalgam filling, PD: removable partial denture.

Table S2. Results of statistical analysis for Immunohistochemistry with SPSS.

UCHL1

Epithelial

Group Statistics										
Groups	N	Mean	Std. Deviation	Std. Error Mean						
UCHL1	25	9.7516	3.65668	0.717138						
Negative Samples	27	14.1030	5.28896	1.01786						
Positive Samples										

Independent Samples Test										
Levene's Test for Equality of Variances					t-test for Equality of Means					95% Confidence Interval of the Difference
	F	Sig.	t	df	Sig. (2-tailed)	Mean Difference	Std. Error Difference	Lower	Upper	
UCHL1										
Equal variances assumed	2.909	0.094	-3.367	50	0.001	-4.35139	1.29253	-6.34752	-1.75526	
Equal variances not assumed			-3.407	47.476	0.001	-4.35139	1.27713	-6.91997	-1.78282	

Subepithelial

Group Statistics										
Groups	N	Mean	Std. Deviation	Std. Error Mean						
UCHL1	30	14.6385	6.73438	1.22952						
Negative Samples	31	15.5946	6.44927	1.15832						
Positive Samples										

Independent Samples Test										
Levene's Test for Equality of Variances					t-test for Equality of Means					95% Confidence Interval of the Difference
	F	Sig.	t	df	Sig. (2-tailed)	Mean Difference	Std. Error Difference	Lower	Upper	
UCHL1										
Equal variances assumed	0.124	0.726	-0.566	59	0.573	-0.95517	1.68800	-4.33384	2.42150	
Equal variances not assumed			-0.566	58.656	0.574	-0.95517	1.68921	-4.33669	2.42435	

CD11b

Epithelial

Group Statistics										
Groups	N	Mean	Std. Deviation	Std. Error Mean						
CD11b	26	2.4332	1.78815	0.34912						
Negative Samples	28	2.0854	2.00219	0.37838						
Positive Samples										

Independent Samples Test										
Levene's Test for Equality of Variances					t-test for Equality of Means					95% Confidence Interval of the Difference
	F	Sig.	t	df	Sig. (2-tailed)	Mean Difference	Std. Error Difference	Lower	Upper	
CD11b										
Equal variances assumed	0.132	0.718	0.673	52	0.504	0.34785	0.51711	-0.68961	1.38557	
Equal variances not assumed			0.676	51.909	0.502	0.34785	0.51483	-0.68528	1.38998	

Subepithelial

Group Statistics										
Groups	N	Mean	Std. Deviation	Std. Error Mean						
CD11b	31	2.4376	2.35631	0.42321						
Negative Samples	30	1.5913	1.45556	0.26076						
Positive Samples										

Independent Samples Test										
Levene's Test for Equality of Variances					t-test for Equality of Means					95% Confidence Interval of the Difference
	F	Sig.	t	df	Sig. (2-tailed)	Mean Difference	Std. Error Difference	Lower	Upper	
CD11b										
Equal variances assumed	1.836	0.181	-0.886	59	0.379	-0.44631	0.50347	-1.45375	0.56114	
Equal variances not assumed			-0.893	50.243	0.376	-0.44631	0.49973	-1.44992	0.55731	

TSLPR

Epithelial

Group Statistics										
Groups	N	Mean	Std. Deviation	Std. Error Mean						
TSLPR	24	3.9808	2.33240	0.47467						
Negative Samples	29	5.9614	2.85658	0.53045						
Positive Samples										

Independent Samples Test										
Levene's Test for Equality of Variances					t-test for Equality of Means					95% Confidence Interval of the Difference
	F	Sig.	t	df	Sig. (2-tailed)	Mean Difference	Std. Error Difference	Lower	Upper	
TSLPR										
Equal variances assumed	0.505	0.481	-2.693	51	0.010	-1.95491	0.72355	-3.41207	-0.49767	
Equal variances not assumed			-2.746	50.992	0.008	-1.95487	0.71182	-3.38392	-0.52582	

Subepithelial

Group Statistics										
Groups	N	Mean	Std. Deviation	Std. Error Mean						
TSLPR	28	3.5705	2.50705	0.47379						
Negative Samples	32	4.5999	2.97154	0.52530						
Positive Samples										

Independent Samples Test										
Levene's Test for Equality of Variances					t-test for Equality of Means					95% Confidence Interval of the Difference
	F	Sig.	t	df	Sig. (2-tailed)	Mean Difference	Std. Error Difference	Lower	Upper	
TSLPR										
Equal variances assumed	0.084	0.773	-1.438	58	0.156	-1.02901	0.71552	-2.46128	0.40326	
Equal variances not assumed			-1.455	57.933	0.151	-1.02901	0.70740	-2.44506	0.38704	

S100

Epithelial

Group Statistics										
Groups	N	Mean	Std. Deviation	Std. Error Mean						
S100	15	1.4197	0.77126	0.19914						
Negative Samples	30	2.3925	1.54100	0.28135						
Positive Samples										

Independent Samples Test										
Levene's Test for Equality of Variances					t-test for Equality of Means					95% Confidence Interval of the Difference
	F	Sig.	t	df	Sig. (2-tailed)	Mean Difference	Std. Error Difference	Lower	Upper	
S100										
Equal variances assumed	3.041	0.088	-2.296	43	0.027	-0.97276	0.42370	-1.82723	-0.11829	
Equal variances not assumed			-2.822	42.987	0.007	-0.97276	0.34469	-1.66790	-0.27762	

Subepithelial

Group Statistics										
Groups	N	Mean	Std. Deviation	Std. Error Mean						
S100	17	2.0306	1.16723	0.28309						
Negative Samples	31	3.7049	1.99691	0.35666						
Positive Samples										

Independent Samples Test										
Levene's Test for Equality of Variances					t-test for Equality of Means					95% Confidence Interval of the Difference
	F	Sig.	t	df	Sig. (2-tailed)	Mean Difference	Std. Error Difference	Lower	Upper	
S100										
Equal variances assumed	3.074	0.088	-3.164	46	0.003	-1.67425	0.52918	-2.73544	-0.69906	
Equal variances not assumed			-3.664	45.738	0.001	-1.67425	0.45692	-2.59412	-0.75438	

TSLP

Epithelial

Group Statistics										
Groups	N	Mean	Std. Deviation	Std. Error Mean						
TSLP	24	3.3356	7.92347	1.57135						
Negative Samples	30	19.7892	9.70380	1.77166						
Positive Samples										

Independent Samples Test										
Levene's Test for Equality of Variances					t-test for Equality of Means					95% Confidence Interval of the Difference
	F	Sig.	t	df	Sig. (2-tailed)	Mean Difference	Std. Error Difference	Lower	Upper	
TSLP										
Equal variances assumed	1.612	0.210	-2.830	52	0.011	-2.45363	2.45381	-11.37151	-1.52989	
Equal variances not assumed			-2.690	51.968	0.010	-2.45363	2.38888	-11.26741	-1.63984	

Subepithelial

Group Statistics										
Groups	N	Mean	Std. Deviation	Std. Error Mean						
TSLP	30	9.6323	5.54505	1.01238						
Negative Samples	33	7.6066	3.38999	0.59012						
Positive Samples										

Independent Samples Test										
Levene's Test for Equality of Variances					t-test for Equality of Means					95% Confidence Interval of the Difference
	F	Sig.	t	df	Sig. (2-tailed)	Mean Difference	Std. Error Difference	Lower	Upper	
TSLP										
Equal variances assumed	2.748	0.103	1.767	61	0.082	2.02573	1.14624	-0.26631	4.31777	
Equal variances not assumed			1.729	47.125	0.090	2.02573	1.17182	-0.33150	4.38296	

TNF-α

Epithelial

Group Statistics										
Groups	N	Mean	Std. Deviation	Std. Error Mean						
TNFα	24	4.1657	2.91191	0.59439						
Negative Samples	30	7.6760	3.41156	0.62286						
Positive Samples										

Independent Samples Test										
Levene's Test for Equality of Variances					t-test for Equality of Means					95% Confidence Interval of the Difference
	F	Sig.	t	df	Sig. (2-tailed)	Mean Difference	Std. Error Difference	Lower	Upper	
TNFα										
Equal variances assumed	0.668	0.417	-4.905	52	0.000	-3.51023	0.87641	-5.28087	-1.75158	
Equal variances not assumed			-4.077	51.753	0.000	-3.51023	0.86096	-5.23807	-1.78238	

Subepithelial

Group Statistics										
Groups	N	Mean	Std. Deviation	Std. Error Mean						
TNFα	28	4.2809	4.00448	0.75678						
Negative Samples	33	5.5107	3.79194	0.66009						
Positive Samples										

Independent Samples Test										
Levene's Test for Equality of Variances					t-test for Equality of Means					95% Confidence Interval of the Difference
	F	Sig.	t	df	Sig. (2-tailed)	Mean Difference	Std. Error Difference	Lower	Upper	
TNFα										
Equal variances assumed	1.055	0.309	-1.230	59	0.223	-1.22901	0.99560	-3.23012	0.77050	
Equal variances not assumed			-1.225	56.243	0.226	-1.22901	1.00421	-3.24129	0.78167	

Table S3. Results of statistical analysis for clinical information of patients (Pearson's χ^2 - test).

Lesion

	buccal mucosa	gum	tongue	
negative	27	13	2	42
positive	32	8	4	44
	59	21	6	86

	buccal mucosa	gum	tongue	
negative	28.9	10.3	2.9	42
positive	30.1	10.7	3.1	44
	59	21	6	86

0.337138464

Prosthesis

	Cr	In	AF	PD	
negative	30	13	6	4	53
positive	28	7	1	4	40
	58	20	7	8	93

	Cr	In	AF	PD	
negative	33.6	11.4	4	4.6	53
positive	24.9	8.6	3	3.4	40
	58	20	7	8	93

0.282566

Contact with metal prosthesis

	non-contact	contact	
negative	7	23	30
positive	5	29	34
	12	52	64

	non-contact	contact	
negative	5.6	24.3	30
positive	6.4	26.7	34
	12	52	64

0.336446589